



Multi-Direction Speaker Mount PN: 2SMA-X

Utilizing the Speedport™ SC, the Multi-Direction Speaker Mount is the ideal solution when installing on-wall speakers.

The Adjustable mounting arm can pivot left or right, up or down and rotate to target the sound direction.

The mount provides two locations to attach the speaker, whether utilizing one 1/4-20" bolt or two.



Articulated Mount allows for customized install.

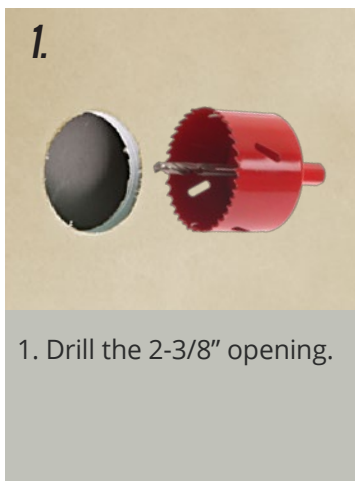


Opening in the screw cap allows for cable pass through.

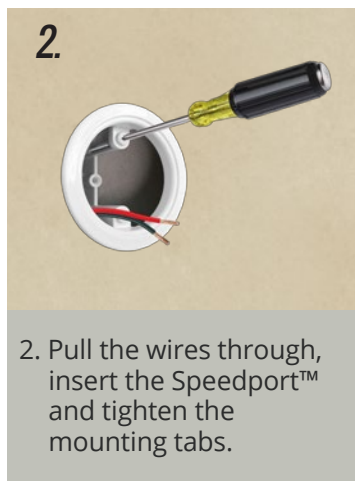
Holds up to 10 lbs!



The Speedport™ Multi-Direction Speaker Mount installs in minutes, and only requires a hole saw and a screwdriver.



1. Drill the 2-3/8" opening.



2. Pull the wires through, insert the Speedport™ and tighten the mounting tabs.



3. Insert the Speedport™ Mount, and tighten the center screw when in the desired position.



4. Attach and connect the speaker.

Patented with multiple patents pending.